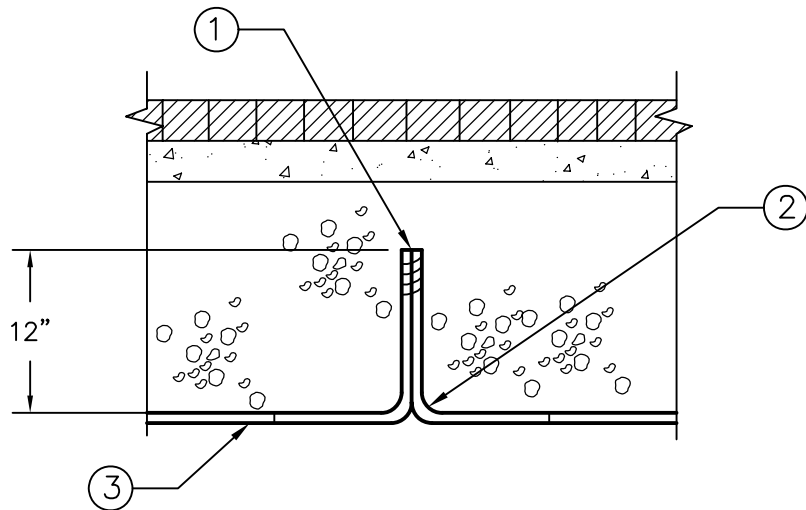


NOTES:

- 1. Tape conduit ends with metallic tape.
- 2. Provide 3/4" x 6" radius sweep elbows, pwe electrical code into sleeve.
- 3. 3/4" electrical conduit per electrical code.



CITY OF ARROYO GRANDE - ENGINEERING DEPARTMENT

STANDARD
PLAN

ISSUE DATE:

**LAMP POST
STUB OUT**

542-AG

JUL 1, 2004

Don Spagnolo, P.E.
Director of Public Works/City Engineer
L.C.E. No. 42993

Sheet 1 of 1